



**National Children's Center**  
for Rural and Agricultural Health and Safety

## **ANNUAL REPORT**

**September 30, 2016 – September 29, 2017**

NIOSH: 2U54 OH009568-08

Submitted by:  
Barbara C. Lee, PhD  
Director

1000 N. Oak Avenue – ML1  
Marshfield Clinic Research Institute  
Marshfield, WI 54449

October 31, 2017

## SECTION I: Center Overview

### Center's Summary

The National Children's Center for Rural and Agricultural Health and Safety (NCCRAHS) was established in 1997 and has a long history of developing, testing and sustaining projects associated with children who live on, work on, and visit farms and ranches across the U.S. Unlike the regional NIOSH Agricultural Centers, this Center has a national focus with a national network of partners and project collaborators. The Center's major emphasis is on national leadership, knowledge mobilization and partnership development.

### Relevance

Injury data collected by National Institute for Occupational Safety and Health (NIOSH) from 1998 to 2014 revealed demographic and injury details, as well as trends over time. While overall numbers of farm injuries are declining, injuries to household youth have held steady since 2009. Injury rates for household youth 10-19 years increased in 2014 and non-working children comprised 60% of all household youth injuries. Hired youth and visiting youth also sustained farm injuries in 2014. Among workers <16 years, the number of worker fatalities in agriculture remains consistently higher than all non-agricultural industries combined.

The Center's work continues to be highly relevant as we build upon scientific evidence regarding the most preventable injuries and the most effective interventions. A core issue with which we deal is the "culture" of agriculture and the prevalence of injuries among hard to reach populations such as Anabaptist communities, children of immigrant workers, and beginning farmers and ranchers.

Our Center's theme is "strengthening public-private partnerships to address childhood agricultural injury prevention." With a modified Socio-Ecologic Model as our guide, our projects are striving to engage the organizations and businesses that influence the business of farming. The higher "sphere of influence" is likely to influence adults' decisions and social norms associated with children's roles and presence in agricultural settings.

### Key Personnel:

Name	Role	Phone	Email
Barbara Lee, PhD	Director	715.387.9182	<a href="mailto:Lee.barbara@marshfieldresearch.org">Lee.barbara@marshfieldresearch.org</a>
Barbara Marlenga, PhD	Deputy Director	715.389.3021	<a href="mailto:Marlenga.barbara@marshfieldresearch.org">Marlenga.barbara@marshfieldresearch.org</a>
Casper Bendixen, PhD	P.I.	715.387.9410	<a href="mailto:Bendixsen.casper@marshfieldresearch.org">Bendixsen.casper@marshfieldresearch.org</a>
Bryan Weichelt, PhD	Co-PI	715.221.7276	<a href="mailto:Weichelt.bryan@marshfieldresearch.org">Weichelt.bryan@marshfieldresearch.org</a>
Marsha Salzwedel, MS	Project Manager	715.389.5226	<a href="mailto:Salzwedel.marsha@marshfieldresearch.org">Salzwedel.marsha@marshfieldresearch.org</a>
Scott Heiberger, BS	Communications Mgr	715.389.7541	<a href="mailto:Heiberger.scott@marshfieldresearch.org">Heiberger.scott@marshfieldresearch.org</a>
Melissa Ploekelman	Outreach Specialist	715.389.5387	<a href="mailto:Ploekelman.melissa@marshfieldresearch.org">Ploekelman.melissa@marshfieldresearch.org</a>
Katherine Barnes, MS, MPH	Research Specialist	715.221.7150	<a href="mailto:Barnes.kate@marshfieldresearch.org">Barnes.kate@marshfieldresearch.org</a>
Josie Rudolphi, PhD	Assoc. Scientist	715.389.4999	<a href="mailto:Rudolphi.josie@marshfieldresearch.org">Rudolphi.josie@marshfieldresearch.org</a>
Marlene Stueland	Business Manager	715.389.3754	<a href="mailto:Stueland.marlene@marshfieldresearch.org">Stueland.marlene@marshfieldresearch.org</a>
Amy Liebman, MA	Co-P.I.	512.579.4535	<a href="mailto:aliebman@migrantclinician.org">aliebman@migrantclinician.org</a>
Juliana Simmons, MSPH	Project Manager	512.579.4538	<a href="mailto:jsimmons@migrantclinician.org">jsimmons@migrantclinician.org</a>
Dennis Murphy, PhD	P.I.	814.865.7157	<a href="mailto:djm13@engr.psu.edu">djm13@engr.psu.edu</a>
Douglas Schaufler, PhD, P.E.	Co-P.I.	814.863.8124	<a href="mailto:dhs106@psu.edu">dhs106@psu.edu</a>
Davis Hill	Project Manager	814.865.2808	<a href="mailto:deh27@engr.psu.edu">deh27@engr.psu.edu</a>
Linda Fetzer	Project Coordinator	814.865.4582	<a href="mailto:lmf8@psu.edu">lmf8@psu.edu</a>
Diane Rohlman, PhD	Co-P.I.	319.384.4007	<a href="mailto:diane-rohman@uiowa.edu">diane-rohman@uiowa.edu</a>
Shelly Campo, PhD	Co-P.I.	319.335.9097	<a href="mailto:shelly-campo@uiowa.edu">shelly-campo@uiowa.edu</a>
Megan TePoel, MS	Project Coordinator	800.935.8643	<a href="mailto:Megan-tepoel@uiowa.edu">Megan-tepoel@uiowa.edu</a>
Sara Lindberg, PhD, MS	P.I.	608.262.6008	<a href="mailto:smindberg@wisc.edu">smindberg@wisc.edu</a>
Andrea Raygor, MS	Evaluator	608.263.0584	<a href="mailto:araygor@wisc.edu">araygor@wisc.edu</a>

Center Web Link: <https://www.marshfieldresearch.org/nccrahs>

## SECTION II: Highlights of Projects with High Impact

### Center: National Leadership and Continuous Improvement

Since its establishment 18 years ago, NCCRAHS has evolved and matured to become the leading program addressing childhood agricultural injury prevention in the U.S. NCCRAHS has been a catalyst for positive change leading to a notable reduction in non-fatal injuries. NCCRAHS provides direction for national initiatives and guidance for efforts undertaken by other organizations. Center leaders serve on multiple national steering committees and participate in all NIOSH Agricultural Center cross-center activities.

Our Center remains the hub for safety guidelines associated with youth working on family farms, youth employed in agricultural work, children playing on farms, safe agritourism operations, and media/journalist relations. Additionally, the Center is the home base for the public awareness campaign to Keep Kids Away from Tractors and the “I Didn’t Know” ATV safety campaign. Furthermore, the Center has been responsive to the needs of vulnerable populations including migrant/immigrant/ seasonal workers with language limitations, Anabaptists, African Americans, Native Americans and Hmong populations. More recently, we are proactively involving other youth-related organizations, agricultural insurance companies, bankers and media in promoting childhood agricultural safety.

While NCCRAHS’s external reach and influence continues to expand, our internal systems are continually refined to increase efficiencies and reduce costs. The longevity of core leaders, combined with junior staff and two new scientists ensures we build upon past successes and focus on only the most pressing issues, while testing new approaches and mentoring future leaders. Another internal improvement addresses the financial perspective. NCCRAHS is able to access resources, services and staff expertise across other programs within and external to Marshfield Clinic Research Institute, enabling cost-sharing from several private sector funding sources.

With many creative and cutting-edge features underway, our robust leadership team, committed staff and solid infrastructure supports the Center's theme of *strengthening public-private partnerships to address childhood agricultural injury prevention*.

Leadership activities of this year included:

- We launched an initiative to develop a “2020 Vision for Childhood Agricultural Injury Prevention in the U.S.” The concept was shared with NIOSH officers Steve Dearwent and Brad Husberg and was described to childhood agricultural safety advocates at the annual CASN meeting. We convened planning meetings with the UW-based Evaluation Team and NCCRAHS staff and expect findings to lay the groundwork for updating the National Action Plan for child agricultural injury prevention.
- We planned and published a dedicated issue of the *Journal of Agromedicine* featuring our Center’s emphasis on the Socio-Ecologic Model. Five guest editors oversaw the process of soliciting papers, guiding authors and promoting readership of research and commentaries that express the value of multi-layered, multi-faceted approaches to agricultural safety and health interventions. Many of the 18 papers had a focus on children who live and/or work on farms.
- Barbara Lee represents NCCRAHS on the Safety in Agriculture for Youth (SAY) USDA-funded national initiative. She also serves on the Board of Directors for the Agricultural Safety and Health Council of America (ASHCA) and the planning committee for ASHCA’s 2018 National Agricultural Safety Summit. She also serves as Senior Associate Editor for *Journal of Agromedicine*. She a Scientific Advisor for the newly established NIOSH Agricultural Center at U of Florida and serves on the NORA AgFF Sector Council.
- At the national level, Barbara Lee strives to keep U.S. Senators and Representatives apprised of the importance of NIOSH funding for its AgFF program. Letters and in-person contacts have been made with key staff of Wis. Senators and Representatives.



- Barbara Marlenga represents NCCRAHS on the National Tractor Safety Coalition, coordinated by the North York Agricultural Center, partially funded by NIOSH.
- Casper Bendixsen is on the Advisory Group for Wisconsin AgrAbility, an Executive Board Member for the Wisconsin 2018 Farm Technology Days and an Associate Editor for the Journal of Agromedicine.
- Bryan Weichelt serves as the co-chair of the International Society of Agricultural Safety and Health (ISASH) Informatics & IT Workgroup. He also serves on the Board of Directors for the Wisconsin Agricultural Tourism Association.
- Marsha Salzwedel is a Certified Safe Farm Board member and a member of the Professional Improvement Committee for the International Society of Agricultural Safety and Health (ISASH), participates in the NCERA-197 Committee, and continues to serve as an Ex-Officio board member for the Wisconsin Agricultural Tourism Association. In addition, she participates in the Grain Handling Safety Coalition, serving on its Young Workers Project Advisory Board.
- Scott Heiberger continues to serve on the Board of Directors of the International Society for Agricultural Safety and Health (ISASH) and is Managing Editor for the Journal of Agromedicine.
- Kate Barnes is part of the Wisconsin's Department of Health Services' Occupational Surveillance Advisory Group.
- NCCRAHS scientists and staff engaged with the media to have news coverage on childhood agricultural safety in several major news outlets, e.g. USA Today, Politico, Progressive Ag journals.

### **Administrative and Planning Core**

*P.I. – B. Lee, B. Marlenga, M. Salzwedel, M. Stueland*

The goal for the Administrative and Planning Core of the National Children's Center for Rural and Agricultural Health and Safety is to set strategic directions and provide a framework that will support, guide, and monitor the progress of four core areas: 1) Evaluation; 2) Outreach, Education and Translation; 3) Prevention, Intervention and Translation; and 4) Research. Guidance for administrative efforts is provided at multiple levels. The Internal Advisory team includes core leaders, principal investigators, and Marshfield Clinic Research Institute (MCRI) administrative leaders. The Center stays on track scientifically and theoretically via external scientific advisors linked with each project. Comprehensive evaluation is ensured by the UW-Madison evaluation team, while pragmatic recommendations come from colleagues in the Childhood Agricultural Safety Network, the Agricultural Safety and Health Council of America, and the NORA Agricultural, Forestry, and Fishing Sector Council. NIOSH advisors keep our activities connected with relevant NIOSH intramural and extramural endeavors.

Over the past year, NCCRAHS Administration convened monthly staff meetings and conducted budget reviews to ensure projects are on track for timely completion. Staff has continued to participate in meetings with external advisors, other NIOSH Agricultural Center Directors, and ASHCA, NORA and ISASH meetings. Staff members have also participated as advisors and in coalitions to help the Center keep abreast of new developments and emerging trends in the field, disseminate new research findings and resources, and to expand partnership opportunities. Activities coordinated within the Administrative Core are described below.



**NCCRAHS Scientific Advisors' Meeting** This meeting was held in April 2017 in Minneapolis, MN with 22 participants, including internal and external staff and scientific advisors. The 1.5 day meeting addressed information about each of the new projects, promoted opportunities to work together, and discussed components for sustainable projects.



Childhood Agricultural Safety Network (CASN) Updates, including child agricultural injury notifications, continue to be sent via email to CASN. This year we increased the number of organizations participating in CASN and continue to diversify the membership. The annual in-person CASN meeting was convened at the in Logan, Utah, with 38 participants. We continued to share child ag injury incidents, press releases and other pertinent information with the CASN participants.

Mini-Grants We received and processed final reports and invoices from FY16 mini-grants. Three new mini-grants were funded for FY17, and the six-month reports were received and reviewed. We also revised and issued the call for the FY18 mini-grant proposals, reviewed applications and awarded one mini-grant for FY18.

Administrative Matters Center Administrative Manager, Marlene Stueland handled all administrative matters with great efficiency this year. Budgets were on track and contractual services were completed. Progress Report (2590) was submitted for continuation request. NCCRAHS Administration also began the process of staff replacement, including reviewing and revising job descriptions. New staff included our Administrative Secretary, Kathie Smith (replacing Lori Breitzke); Outreach Specialist, Melissa Ploeckelman (replacing Tammy Ellis) and a new position - Associate Scientist, Josie Rudolphi, PhD, who graduated from U of Iowa.

### Advanced Knowledge Mobilization and E-Communication (AKME)

*P.I. – S. Heiberger, M. Ploeckelman, M. Salzwedel*

The "Advanced Knowledge Mobilization and E-communications (AKME)" team facilitates the Children's Center health communications, marketing, and technology with messaging, packaging and dissemination of information into, out of, and across all projects. This team collaborates with Center-wide and external partners to identify, design, utilize and evaluate appropriate communication approaches for their multiple purposes. With cutting-edge technologies, this team facilitates timely and culturally-appropriate communication strategies, including social media, virtual meetings, and mobile applications. Scott Heiberger also serves as a communication specialist for the Upper Midwest Agricultural Safety and Health center (UMASH) at U of MN.

NCCRAHS hosts several websites that are continuously upgraded. The general site gives an overview of many program initiatives and provides downloadable professional reports ([www.marshfieldresearch.org/nccrahs](http://www.marshfieldresearch.org/nccrahs)). The NAGCAT site ([www.nagcat.org](http://www.nagcat.org)) is being retired, with core content shifting to the public resource site. The Childhood Agricultural Safety Network (CASN) has a dedicated website ([www.childagsafety.org](http://www.childagsafety.org)) managed by our staff to host campaigns to Keep Kids Away from Tractors and promote ATV safety. We have a website built for agritourism operators that hosts health and safety walkthrough information, signs and resources for operators to keep visiting children safe ([www.safeagritourism.com/](http://www.safeagritourism.com/)). Cultivate Safety ([cultivatesafety.org](http://cultivatesafety.org)) is our newest site, built for farm parents, with injury prevention information, work guidelines, prevention briefs and safe play area guidance for parents with children ages 0-17 years. Our websites experience continual growth in content and a steady increase in visitors from all over the world.



Over the past year, the AKME project has been very active in numerous domains. The following sections highlight prominent activities of this project:

- Identified AgInjuryNews.org as centerpiece project (See separate section below). The news clippings database, approaching 3,000 articles, now constitutes our new Aim 3: *Establish AgInjuryNews.org as the primary source of farm-related injury and fatality news clippings in the United States.*
- Wrote a "Call for Papers" for the Journal of Agromedicine Special Issue for "Impacting Human Health and Safety in Agriculture via Influential Change Agents." The introductory paper explains how the Socio-Ecologic Model (NCCRAHS grant proposal framework) is used to depict ways in which multiple dimensions and complex human interactions influence an individual. The call generated 16 manuscripts and six commentaries. Publication date was October 2017.

**Launched Agricultural Youth Work Guidelines (AYWG)** The AKME team worked with Biomedical Informatics to finish the website <https://cultivatesafety.org/work/>. Marsha Salzwedel secured a plenary session at the International Society for Agricultural Safety and Health (ISASH) annual conference at which to debut the guidelines. We used a combination of PowerPoint, live skits, and a balloon drop (with prizes inside the balloons) at ISASH. We followed up with media and social media promotion. AYWG release was picked up by the following websites: American Agriculturalist, Beef Magazine, Dakota Farmer, FarmFutures.com (Progressive Farmer), Farm2Ranch, Georgia Farm Bureau, Kubota Tractors, Louisiana Farm Bureau Federation, Michigan Farmer, New Mexico FFA, NIOSH AgFF website, Ohio Farmer, Southeastern Farm Press, Southwest Farm Press, Wallace Farmer, Western Farm Press.

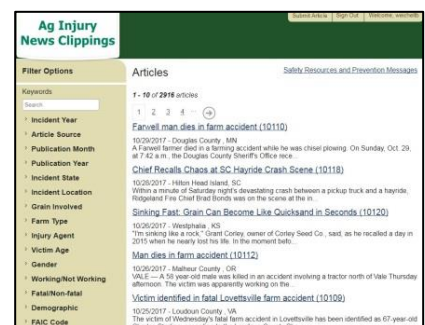
**Cultivate Safety Website** The pilot testing and redesign of the Cultivate Safety website was completed, adding the AYWG guidelines, along with a large amount of associated content. Added/updated content and design updates on the Home page, the Accidents page and the Play page. Redesigned and added adult resources to the Resource page. Prevention Briefs updated with current statistics and color photos. Implemented several website enhancements, including migrating website to a different server, to address speed/page loading issues.

**Resource Library** A design was created for the new Resource Library “website” which was reviewed and finalized by website committee. Mock ups completed for resource entry, resource management, filter/search page, and results page. Terminology and filtering criteria established (e.g. keywords, tags, related resources, etc.). Inventory of NFMCC/NCCRAHS resources established and is currently being updated by multiple staff members. Programming has begun on small portions of application.

**Social Media Strategy** NCCRAHS has made a concerted effort to reach end-users at the farm level by using social media. Drawing upon current social media best practices, NCCRAHS developed a strategy that positions NCCRAHS as a member of a social media community. Instead of one-way communication (pushing resources and making social capital “withdrawals” by asking users to read our content and click on our resources) we are engaging in “two-way symmetrical communication”, which research shows to be the most effective and long-lasting model of public relations. This is achieved by limiting “self-serving” posts to 20 percent or less of total posts, and instead posting and Tweeting about items of interest to a rural community. We greatly increased our number of Facebook posts and Tweets per month, making certain we post daily on our three Facebook pages: National Farm Medicine Center, Cultivate Safety and NCCRAHS. We have increased the combined number of followers on those pages by more than 40 percent, to a total of more than 2,000.

**AgInjuryNews.org**  
*P.I. – B. Weichelt*

The incidence of non-fatal injuries in the AFF sector has become difficult to quantify, particularly after the National Institute for Occupational Safety and Health (NIOSH) discontinued national surveys of non-fatal injuries to self-employed farmers, ranchers, and children on farms in 2015. News reports have been useful for identifying agricultural injury and fatality cases in local and regional efforts, but these efforts have had limited value at the national level. With increased reporting and access to internet-based injury information, the AgInjuryNews.org initiative was launched in 2015 to augment other sources of occupational injury and fatality data. Our initiative has shown potential to become a systematic, up-to-date, publicly available, web-based collection of AFF-related injuries and fatalities that can fill a gap, and provide national-level data to guide research, interventions, and public policy development in AFF safety. This system and its database is based on our pilot initiative which explored surveillance techniques for locating, capturing, and categorizing digitized news media reports and disseminating the AFF injury data within days of publication through [www.AgInjuryNews.org](http://www.AgInjuryNews.org).



*National Steering Committee* This meeting was held in April 2017 in Minneapolis, MN with 22 participants. The committee consists of professionals in safety, surveillance, insurance, informatics, communications, government data, education and outreach. The committee continues to advise the project and will meet twice annually via teleconference.

*System Growth* As of September 2017, the system contains 2,417 unique U.S. incidents involving children and adults. There are nearly 3,000 total articles loaded (which includes follow-up stories), and the site is used by agricultural health & safety researchers, insurers, manufacturers, healthcare, and government data specialists. Current registered users of AgInjuryNews (n=~250) have reported their intent to continue using the system and have confirmed its value in their organizations' efforts to inform their research, datasets, interventions, and outreach. These users and others have begun to leverage the dataset for innovative research projects and to inform future programs in agricultural health and safety including a brief report or "Spotlight" of agricultural injuries and fatalities published by the Upper Midwest Agricultural Safety and Health (UMASH) center in 2016. Collaborators from around the country, and internationally, have expressed interest to leverage the dataset for additional programs and purposes.

*Funding* AgInjuryNews.org secured a \$10,000 grant from Agricultural Safety and Health Council of America. In addition, Bryan Weichelt submitted two grant proposals to NIOSH – an R01 (Feb) and an R21 (March). Both proposals leverage AgInjuryNews.org and its dataset as core components of research inquiry. The combined aforementioned funding would be applied to improving daily screening of the news feed, data quality, workflow efficiencies, and data reporting. It is anticipated that the AIN initiative will emerge as the premier supplier of news report data and customized delivery options reaching and targeting key influencers. The initial focus of youth was an excellent test bed and proof of concept through NCCRAHS and the team plans to expand this effort well beyond the original conceptual plans of an electronic news report dataset.

### **Strengthening Organizational Capacity to Prevent Childhood Agricultural Injuries**

*P.I. – B. Lee, M. Salzwedel*

"Strengthening Organizational Capacity to Prevent Childhood Agricultural Injuries" uses marketing approaches and principles of corporate social responsibility. The project takes advantage of current relationships with organization executives to reach into networks of leaders across domains of youth serving organizations, insurance companies, agricultural media, and agricultural bankers. The goal of the project is to increase the number and spectrum of groups that incorporate a focus on childhood farm safety into their ongoing systems, policies and communications with constituents. The primary focus of this project has been re-directed for this year to the "Next Generation" Agricultural Youth Work Guidelines (AYWG) (described in the next section).

Over the past year, SOC has continued to connect with other organizations via presentations, workshops, and webinars, e.g. WI Farm Bureau, WI Fair Board Association, Upper Midwest Fruit & Vegetable Growers, Grain Handling Safety Coalition, North Central Education/Extension Research Activity (NCERA-197), NE Ag Safety and Health Coalition, and Farm Credit Services East. John Deere is an established connection, and though we have not done presentations this year with them, we did connect with their new communications manager, who solicited a fairly large amount of our child ag safety information for their use, noting that they want to become known as the "leader of child safety on farms" among equipment manufacturers. We are continuing to work with them to arrange a visit for this new person. We continue to connect with many of our established network, both through CASN and through various projects. Through these connections and presentations, we are able to raise awareness of child agricultural injuries/fatalities and prevention strategies, with many participants indicating intent to implement these strategies.

We continue to work with the Insurance industry, including the owner of Rural Mutual Insurance, supplying him with materials and information. We also continue to work with Eric Vanasdale (Country Financial), who served on our AYWG steering committee, provided testimonials for the project and continues to promote child safety through his network, which includes the National Association of Mutual Insurance Companies (NAMIC). The data from the 2015 and 2016 NAMIC surveys has been analyzed and a manuscript drafted. Once final edits are made, it will be submitted for publication.

In response to a local childhood agricultural fatality among the Mennonite population, we reached out to the County District Attorney and Social Services to offer guidance. Our resources are being used to help a specific family gain knowledge on how they can be more protective of children on their farm. In addition, staff plan to demonstrate a farm safety audit (with focus on child safety) on this farm (done on October 11<sup>th</sup>). At the county-wide level, staff is involved in facilitating the coordination of safety and health outreach in the Anabaptist community. This is a new partnership for our Center and, given the increasing population of Anabaptist farm families, is important for enhancing our Center's expertise and potential reach beyond the region.

We continue to make many valuable connections in this project, which help us disseminate information about our "projects and products." The agritourism materials continue to be a popular topic, which enable us to connect with organizations and educate them on child safety on the farms, and we hope to be able to use information on youth workers on agritourism operations to communicate with these farm owners/operators in the future. In addition, our continued work with the Grain Handling Safety Coalition enables us to continue promoting co-branded materials and make new connections. Meetings are scheduled soon to continue refining the FY18 focus for this project.

**"Next Generation" Agricultural Youth Work Guidelines (AYWG)**

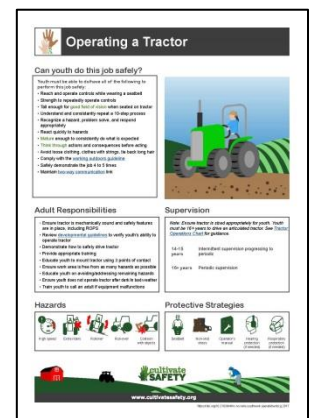
*M. Salzwedel, B. Lee, T. Ellis (through February), S. Heiberger*

The overall goal of this initiative is to help young people work safely in agriculture. It is known that safe and appropriate work is inherently good for children; and agriculture offers many opportunities for them to develop work skills while gaining an appreciation for farming and related industries.

This next generation of guidelines will account for: A) evidence-based recommendations for activities and issues germane to child development (physical, social, intellectual, emotional); B) current child ag injury/fatality data; C) changes in production agriculture; D) proposed changes in child labor regulations; E) lessons learned about the consensus development process; F) information technology and health communications theory/practice; G) updated recommendations for adults; and H) priority topics.

The AYWG project has made significant progress over the past year. The following sections highlight prominent activities of this project:

**Guideline Content** Material for the first 20 work guidelines is finished and loaded on the website. The final 30 topics have been defined and content specialists are being identified. Several Job Hazard Analysis Charts and Checklists have been sent to reviewers for updates. Content updates for two of the guidelines are complete, and posters are being created. With the goal of improving Altmetrics scores, DOIs were created and added to the original 20 guidelines, as well as some of the other website content (e.g. supervision handout, communication template, etc.). The DOIs for the remaining 30 guidelines have also been requested.



**Graphics and Templates** The logo has been finalized, and we have both horizontal and vertical versions, as well as a version with just "the hands." Black and white versions have been created by NCCRAHS project staff to add to images used in social media and for sharing with other organizations. The main images and secondary images (hazards and PPE) for the remaining 30 guidelines are complete. Videos for Bending, Lifting and Climbing are complete and have been added to the website, along with a handout detailing the steps for proper execution of these tasks. Videos that explain "how to use" different features of the website will be added within the next month.

**Website** The first 20 work guidelines have been added to the website and are available in three formats: interactive, read, and print. The remote pilot testing is complete, and all recommendations and enhancements have been implemented on the website, with the new design being more attractive, easier to navigate and less text heavy. An electronic card sort process with stakeholders is underway to determine the best way to group the guidelines on the website.



2017 ISASH Conference The new guidelines and website were premiered at the 2017 ISASH Conference. This presentation was the opening plenary session for the conference, and included skits, testimonials, videos, and a PowerPoint presentation to introduce the newly updated guidelines. The release of the guidelines at the ISASH Conference generated considerable excitement, and we have had inquiries on the possibility of translating the guidelines into several foreign languages (e.g. French, Spanish, Swedish). The Steering Committee was very helpful in the initial dissemination of the guidelines, and some of them, such as Jeff Hicken (FFA), are helping us find additional ways to incorporate them into their organizations (e.g. potential to include them in FFA Proficiencies and SAEs).

Funding Project work from Phase I of the guidelines was conducted with funds from NIOSH, CHS and NFMC donor funds. Funding (\$25,000) has been obtained for Phase II of the project from CHS plus additional allocation from NFMC donor funds. In addition, these guidelines will also be used to enhance networking through the SOC project, so some support will be available from that project as well.

### **Protecting Children While Parents Work**

*P.I.s – A. Liebman and B. Lee, J. Simmons, M. Salzwedel*

This project aims to increase the engagement of agribusiness leaders in facilitating availability of and access to off-farm childcare services for migrant and immigrant agricultural workers with children younger than 12 years. It is based upon the successful RCMA-Redlands Christian Migrant Association (RCMA) model in Florida and initially involved the RCMA Executive Director, the Executive VP of National Association of Agricultural Employers and the federal Director of the National Migrant and Seasonal Head Start Program. The recent turnover in these positions, has not negatively affected the project.

Over the past year, the team has been successful in information gathering among stakeholders and in building relationships with stakeholders such as the National Council of Agricultural Employers, Agricultural Personnel Management Association and Migrant and Seasonal Head Start. Major accomplishments include:

- The team held an in-person meeting in Washington, DC in February 2017 to plan out the upcoming project year, including participation in a conference for agribusiness leaders where we plan to bring together agribusiness leaders and childcare providers in order to gather feedback on the development of a partnership strategy; and set a roadmap for guiding the development of childcare programs in agricultural regions.
- We gathered data from farmworker parents in Florida through collaboration with the Farmworker Health Project. Our farmworker parent interviews provided valuable insight to current practices regarding childcare among migrant and immigrant agricultural workers. Additionally, the survey provided information about how often farmworkers miss work due to childcare-related issues, and the willingness of farmworker parents to choose employment in areas based on the availability of childcare services. We believe these findings will help us to continue identifying common ground among farmworker parents, agribusiness leaders, and childcare providers.
- We established a web presence on the Marshfield website.  
(<http://www.marshfieldresearch.org/nccrahs/protecting-children-while-parents-work>).
- We published two manuscripts for the *Journal of Agromedicine* article that reflected the relationship of our project with the Socio-Ecologic Model.

### **Beginning Farmers and Ranchers**

*P.I. – C. Bendixsen, K. Barnes*

This project strives to understand the attitudes of the millennial generation and non-traditional family farmers whose livelihood has been launched by USDA-funded support. The team is comparing and contrasting demographics and practices of African Americans, Native Americans, Hispanics, and other unique groups with farmers of conventional agricultural to guide future culturally relevant interventions addressing children and farm safety.

Over the past year, BFR has experienced a number of successes. It's been a highly productive period for BFR in moving forward with our connection to ALBA (Agriculture and Land-Based Training Association) of California and the Midwest Organic and Sustainable Education Service (MOSES). The project is illuminating emerging trends in agriculture, as well as assessing the needs of the next generation. Ideas about new outreach, materials, and modes of communication are beginning to percolate for the study team. This fact provides hope for the remaining years of the BFR project and future projects that could actualize the findings here.

Other project highlights include:

- Kate Barnes presented at the 2017 MOSES Organic Farming Conference on February 25<sup>th</sup>. The teams also reconnected with our contact at the Wisconsin School for Beginning Dairy and Livestock Farmers and have done a total of three in-depth interviews with this group.
- Great Lakes Indian Fish and Wildlife Commission (GLIFWC) has asked to work with NCCRAHS again. They are very enthusiastic to build a maple syrup/sugar-bushing youth safety program lacing Native knowledge with formal safety knowledge. We continue to plan for Year 4 and do mostly behind-the-scenes work.
- ALBA submitted an application for an NCCRAHS mini-grant with Cap's assistance. It was well-received and was accepted for funding. Casper is the primary contact person for this organization. However, GLIFWC's application was postponed because our contact had to assist with the wildfires out west.
- Kate completed the summer's In Her Boots events in August. The four events were very successful. The event organizer, Lisa, began dedicating lunch hours for organizations to visit with tables of participants. NFMC/NCCRAHS received a very positive response and Kate's handouts were all distributed at each event. The audience was engaged and asked a lot of questions about balancing the benefits of farming with the risks.
- We welcomed Rachael Rol into the Clinic's summer internship program. She completed 14 interviews that are currently being transcribed and prepared for further analysis. Rachael presented her topic at the Summer Research Internship Program Seminar and received a positive response. Her interviews represented the incorporation of advice from the Scientific Advisors to include traditional farmers' and ranchers' perspectives on child safety. She found 1) farmers talked about a desire for a home-work balance while insisting farming is a lifestyle, not an occupation; 2) there is a lack of awareness of safety resources; 3) farmers feel their children are exceptional, often believing their children can do more advanced farm tasks earlier than non-farm children; 4) parents use "invisible boundaries" as a test of their parental effectiveness and the child's autonomy often meaning the child ends up in unsafe environments on the farm.
- Josie Rudolphi joined NFMC and will spend part time on the BFR project. Josie and Kate are planning a pilot survey to approximately 3,000 Wisconsin farmers. They are collaborating with the National Agriculture Statistics Service (NASS). The survey will provide a way to preliminarily test the hypotheses generated in the ethnographic work on BFRs conducted thus far and gauge young farm parent's confidence in assigning tasks and PPE, as well as ascertaining their parenting style. The survey is another way the project is addressing the advice of the Scientific Advisors to include more traditional farmers and ranchers.

### **SAY National Clearinghouse**

*P.I. D. Murphy (through August), D. Schaufler (starting August), D. Hill (through August), L. Fetzer*

In 2013, in response to the agricultural community's negative response to updated regulations for child labor in agriculture, the USDA awarded funds to establish a clearinghouse for educational resources. The Safety in Agricultural Youth (SAY) clearinghouse is now under construction. The goal of this project is to operationalize an infrastructure that ensures public access to an evidence-based and technologically appropriate safety and health curriculum for youth working in agriculture. This project is evaluating the roll-out of SAY at a regional level, then, based upon results, generate recommendations for SAY's modification, termination, or long-term

sustainability.

The following highlight project activities for SAY over the past year:

2017 SAY Clearinghouse Evaluation In collaboration with the evaluation team, we launched the 2017 SAY Clearinghouse evaluation to 150 4-H leaders and 615 agricultural educators throughout Utah and Pennsylvania. This survey tool followed an eNews to the respective listservs with information about SAY and the SAY National Clearinghouse. The results from the baseline survey were received and the questions focused on familiarity, usability, and quality of the Clearinghouse. The sample included a total of 150 4-H educators and 615 participants of the agricultural educator listservs from Utah and Pennsylvania with 80 participants responding to the survey. Results showed that most educators were not aware of the Clearinghouse and this information will be used to guide additional outreach activities. Most aspects of the Clearinghouse were rated in mid-range settings. Most educators found it useful for resources to be aligned to AFNR standards. Majority of the users rated the Clearinghouse as moderately useful or very useful. The curricula/resources were rated very to extremely useful. The most common curricula and resources used by participants including animal safety, tractor safety and National Safe Tractor and Machinery Operation Program (NSTMOP).

FARMHAT We also launched our youth evaluation of the new FARMHAT mobile friendly website. We developed a short lesson on how to access and use the mobile friendly website and made this available as an on-line lesson (participants will be given a link to a box account where they can access this lesson). Once they view the lesson and conduct the evaluation on their home farms, they will be sent another link to a Qualtrics survey to complete that asks them to answer 15 questions related to ease of use and practicality of this tool. We identified five 4-H and agricultural educators each in Utah and Pennsylvania and communicated with them via email and phone conversations to explain our project. A researcher in Wisconsin has worked with FFA group's there with surveys and other materials, and is interested and willing to work with us in finding students to try out the FARMHAT app. We are connecting at the end of September to work out the details, and expect to proceed within the fall months with the testing of the app by the students.

New Website Design and Launch SAY Clearinghouse is hosted on the Penn State Extension website and the redesign changed some of the search capabilities of the Clearinghouse. A navigation page was developed and posted which should provide better navigation through the Clearinghouse based on AFNR standards. However, survey information and input from the National Steering Committee may determine if additional changes need to be made to increase the usability of the Clearinghouse. Based on the Google Analytics, there was an increase of approximately 1,500 people that accessed the SAY homepage in the last quarter (6/17 – 8/17) from the previous quarter (3/17-5/17). Clearinghouse traffic is also tracked with Google Analytics but this may be a challenge because of the new Penn State Extension website which houses the Clearinghouse. We will be work with Ag-IT to determine if we can continue to capture the same traffic numbers or whether there may be a period that the numbers will not be accurate.

### **Filling the Gaps in Child Agricultural Injury Data**

*PI – B. Marlenga, R. Berg, W. Pickett*

The goal of this project to explore the most promising, existing public health surveillance systems to determine their utility for assessing the health and safety of children in agricultural settings. The focus of the project is on determining how these existing surveillance systems can help to “fill in the gaps” by identifying injury events missed by other methods and/or providing more details about risks, activities, and circumstances surrounding child agricultural injury events. This information, in turn, can help to guide our prevention efforts.

Over the past year, we have made good progress in achieving our specific aims.

- We drafted an Interim Report on this project and sent it to Peggy Yih at the National Academies of Science on November 23, 2016 for their project “Developing a Smarter National Surveillance System for Occupational Safety and Health in the 21<sup>st</sup> Century.” The working group does not include anyone with a background in agricultural injury surveillance, so our work to-date may be helpful.

- A manuscript was published in January, 2017: Social environments, risk-taking and injury in farm adolescents. *Injury Prevention* (published online January 31, 2017, Epub ahead of print).
  - *Received 2017 International Society for Agricultural Safety and Health (ISASH) Research Paper Award.*
- We published a manuscript in March, 2017: News reports and their role in child agricultural injury prevention. *Journal of Agromedicine*, 22 (2): 71-79.
  - *The Pump Handle, March 29, 2017, a science blog by Celeste Monforton, featured our manuscript “News Reports and their Role in Child Agricultural Injury Prevention.”*  
<http://scienceblogs.com/thepumphandle/2017/03/29/prevention-message-opportunities-in-media-coverage-of-worker-fatalities/>.
- The Child Agricultural Injury Fact Sheet for 2017 was updated and disseminated.
  - *The press release about the 2017 Child Agricultural Injury Fact Sheet was picked up by numerous media outlets.*
- A manuscript was submitted entitled “Health and well-being among young people from Canadian farms: Associations with risk-taking” to *Journal of Rural Health* on May 25, 2017. Received notification that the manuscript was accepted on September 12, 2017.
- We have completed a near final draft of main paper from our analyses of the national data sets. The draft manuscript was sent to Clay Mann at the National EMS Information System (NEMSIS) and Ashley Bergeron at Wisconsin Division of Public Health for their review and approval of our acknowledgement of their contributions. Clay Mann, Principal Investigator for NEMSIS, emailed that the work we have done and reported on in the manuscript is very valuable and highlights the need to bolster our national ability to describe agricultural injuries. The manuscript also received approvals from Ashley Bergeron and the Wisconsin Data Governance Board.

### **Enhancing Supervisors’ Skills and Employer Policies: Young Agricultural Workers**

*P.I. – D. Rohlman, S. Campo, M. TePoel*

The goal of this project is to develop, evaluate, and disseminate an online training for supervisors of young agricultural workers. This project, which includes a randomized controlled trial, blends the elements of Total Worker Health® with agricultural safety. Content on substance abuse, fatigue and cell-phone use will augment existing safety resources and a model policy for employers. Results will inform its impact on both English- and Spanish-speaking supervisors.

The team continues to make progress on the training. Over the past year, we continued iterative testing and revision of the online training. We filmed videos for the training (English and Spanish) at the National Education Center for Agricultural Safety. We translated materials into Spanish, continued to modify measures, and received a modified IRB approval.

We pilot tested the English version of the training and online process with health and safety managers of agricultural operations and experts in agricultural safety and health. The training and questionnaires were modified based on their feedback. A recruitment plan for the efficacy trial is in progress. We plan to pilot test the Spanish version of the training this summer. Feedback from pilot testing was favorable, with several participants offering to help promote the training. Our primary challenge over the next few months will be recruitment for both English and Spanish versions of the training. We will be reaching out to members of the advisory board and other interested persons who might be able to connect us with our focus population.

We developed a recruitment plan for the efficacy trial. Drs. Rohlman and Campo will attend and actively recruit at multiple conferences over the next year, starting with the World Dairy Expo in October 2017. We designed a promotional postcard in English and Spanish that will be made available at conferences and shipped to



advisory board members. The postcard contains information about the training and research study and a link to our website, [www.agosh.org](http://www.agosh.org) (also in English and Spanish), where potential participants can access the online consent form and participate in the study. We held an advisory board meeting in September, where we presented our recruitment plan. In addition, we piloted tested the Spanish version of the training and online process with experts in agricultural safety and health.

## **Evaluation**

*P.I. – S. Lindberg, A. Raygor*

The goal of the Evaluation Core at the NCCRAHS is to guide documentation and analysis of the success of the center and its projects in achieving objectives for research, education, and public service. Evaluation data provide empirically-driven feedback to guide decision-making, policy formulation, and improvements at the center, all of which are dedicated to improving the safety and health of children who live on, work for, or visit agricultural settings.

The evaluation team visited the Center in Marshfield and met with each project to discuss the evolution of their projects. These face-to-face visits, which ideally are held four times per year, are critical in maintaining integration of the evaluation activities with the overall center. Throughout the five-year grant cycle, evaluators will continue to check in with PIs and staff about changes/evolutions in the projects' logic models, goals and indicators. The evaluation team remains available to PIs and staff to assist with supplementary evaluations. For example:

- Barbara Lee and the evaluation team discussed preliminary ideas on evaluating each designated project scientific advisor to assess the effectiveness of external advisor guidance, level of involvement, and the potential restructuring of the advisory board. Thus, the evaluation team led an effort to assess the effectiveness of external advisor guidance and level of involvement during the first two years (2014-2016) of the five-year grant cycle. Semi-structured interviews were conducted with one to two key personnel from each of the NCCRAHS projects to assess advisor level of involvement and guidance. Interviews were informal 30-minute telephone conversations scheduled between the weeks of November 7, 2016 and November 28, 2016. The interview protocol entailed items asking key personnel to identify their advisor, if they work one-on-one with their advisor or through a committee, their advisors' level of involvement with the project, what works well with their advisor, what does not work well with their advisor, and whether key personnel think additional time with their advisor at the annual scientific meeting is warranted. An executive summary detailing major themes as well as recommendations for advisor restructuring was submitted on December 20, 2016.
- The evaluation team launched the 2017 Safety in Agriculture for Youth (SAY) National Clearinghouse Evaluation Survey on February 8, 2017. The evaluation tool asked educators to respond to questions regarding the familiarity, usability, and quality of the SAY National Clearinghouse website. Educators were also asked to share their agricultural-related profession, how they typically get information about agricultural safety resources and curricula, how they use the information from the SAY National Clearinghouse, and how useful it is to have educational materials align with Agriculture, Food, and Natural Resources (AFNR) standards. On April 3, 2017, the 2017 Safety in Agriculture for Youth (SAY) National Clearinghouse Evaluation Baseline Survey Results was sent to the SAY Project Team.
- Beginning in late January 2017, the evaluation team initiated a cross-project qualitative analysis using the NCCRAHS project quarterly reports. The purpose of this exploratory qualitative analysis was to identify cross-cutting themes across NCCRAHS projects, with the goal of aiding the Children's Center in identifying challenges, opportunities, and priorities for the remaining years of the grant in time for the 2017 Annual Scientific Advisors Meeting. The 2017 Cross-Project Exploratory Qualitative Analysis Initial Report was completed in March 2017. Four cross-cutting themes emerged from this data analysis: Research, Dissemination, Reflection, and Communication. Because each NCCRAHS project is unique in their aims, activities, progress indicators, and desired outcomes, each theme contains sub-categories, based on codes from data analysis, that best represent overlapping trends. A potential fifth theme, NCCRAHS Leadership, began to emerge from data analysis but this theme was not as cross-

cutting across projects as the other four themes.

- The evaluation team sent out surveys to the Scientific Advisors and AgInjuryNews.org Steering Committee Members following the 2017 April meetings in Minneapolis. Responses regarding perspectives on the meetings were collected and reports sent to NCCRAHS leadership in early May for each group.
- Sara Lindberg, Andrea Raygor, Barbara Lee, Barbara Marlunga, and Marsha Salzwedel met via conference call on July 11, 2016 to discuss the NCCRAHS “2020 Vision” National Initiative Assessment. The discussion focused around reviewing and revising five objectives first drafted for the 2017 Scientific Advisor's Meeting. To date, planned evaluation efforts include semi-structured interviews of key informants of agricultural health and safety. The evaluation team will develop an interview protocol broadly based on agricultural safety work with specific prompts based on priority areas including, but not limited to, special populations (e.g. migrant, Anabaptist, etc.) federal and private sector fund contributions, agricultural injury data, and the role of private industry. List of key informants will be developed by NCCRAHS Leadership and will include a wide array of agricultural safety actors/participants, e.g. NIOSH, EPA, USDA, Department of Labor, ASHCA, Farm Bureau, 4H, FFA, farmers insurance, agriculture bankers, etc. The evaluation team and NCCRAHS leadership are initiating this major evaluation activity in Fall 2017 to guide the Center during the remaining years of the grant and beyond.
- The evaluation team launched Round Two of the 2017 Safety in Agriculture for Youth (SAY) National Clearinghouse Evaluation Survey on September 6, 2017. Results are anticipated in late October/early November 2017.

## Publications

### *Administration:*

Lee BC, Bendixsen C, Liebman AK, & Gallagher SS. “Using the Socio-Ecological Model to Frame Agricultural Safety and Health Interventions.” *Journal of Agromedicine*, vol. 22, no. 4, 2017, pp. 298-303.  
<http://www.tandfonline.com/doi/full/10.1080/1059924X.2017.1356780>.

### *AKME:*

Marolf A, Heiberger S, Evans J, Joseph L. “How Agricultural Media Cover Safety Compared with Periodicals in Two Other Hazardous Industries.” *Journal of Agricultural Safety and Health*, vol. 23, no. 4, 2017, pp. 83-94, DOI 10.13031/jash.11900.

Heiberger S. “Journal of Agromedicine ‘Leader in the Field’ 2017: William J. Nelson.” *Journal of Agromedicine*, vol. 22, issue 1, 2017, pp. 66-67, <http://dx.doi.org/10.1080/1059924X.2016.1261573>.

Heiberger S. “Journal of Agromedicine ‘Peer Reviewer of the Year’ 2017: Joan D. Flocks.” *Journal of Agromedicine*, vol. 22, issue 1, 2017, pp. 68. <http://dx.doi.org/10.1080/1059924X.2016.1261565>

### *Protecting Children:*

Lee BC, Salzwedel MA, Chyou PH, & Liebman AK. “Employers’ Perspective on Childcare Services for Hired Farm Workers.” *Journal of Agromedicine*, vol. 22, no. 4, 2017, pp. 376-383,  
<http://www.tandfonline.com/doi/full/10.1080/1059924X.2017.1358230>.

Liebman AK, Simmons J, Salzwedel M, Tovar-Aguilar A, & Lee BC. “Caring for Children While Working in Agriculture: The perspective of farmworker parents.” *Journal of Agromedicine*, vol. 22, no. 4, 2017, pp. 406-415. <http://www.tandfonline.com/doi/full/10.1080/1059924X.2017.1358229>.

### *Beginning Farmers and Ranchers:*

Barnes KL, Bendixsen, CG. “When This Breaks Down, It’s Black Gold”: Race and gender in agricultural safety and health.” *Journal of Agromedicine*, vol. 22, no. 1, 2017, pp. 56-65.  
<http://www.tandfonline.com/doi/full/10.1080/1059924X.2016.1251368>

Bendixsen CG. "The Entanglements of Agrarian Ethics With Agrarian Risks and Leveraging Them in Agricultural Health Safety." *Journal of Agromedicine*, vol. 22, no. 1, 2017, pp. 17-25.  
<http://www.tandfonline.com/doi/full/10.1080/1059924X.2016.1248308>

*Filling the Gaps in Child Agricultural Injury Data:*

Pickett W, Berg RL, Marlenga B. "Social environments, risk-taking and injury in farm adolescents."  
*Injury Prevention*, January 30, 2017. [Epub ahead of print]  
doi: 10.1136/injuryprev-2016-042075.

Marlenga B, Berg RL, Gallagher SS. (2017). "News reports and their role in child agricultural injury prevention."  
*Journal of Agromedicine*, vol. 22, no. 2, 2017, pp. 71-79, 2017,  
doi: 10.1080/1059924X.2017.1282909.

**NCCRAHS' RESOURCES, PRESENTATIONS, and MATERIALS DEVELOPED in GRANT YEAR THREE (FY '17)**

Type of Resource	Core	Title	Date	Notes
Presentations & Resources	SOC/BFR	<ol style="list-style-type: none"> <li>1. Keeping Kids Safe on the Farm</li> <li>2. The Ethical Entanglement of Raising Kids on the Farm</li> <li>3. Empowering the AgSafe Family</li> <li>4. Using the Spheres of Influence</li> </ol>	10/04-06/16	CASA Conference. Materials Distributed: Quality time posters, Garden booklets, Farm equipment booklets, ATV rack cards, Stand TALL flyers, NCCRAHS Resource brochure, Parent 1 <sup>st</sup> posters
Presentation & Resources	AYWG/SOC	Benefits & Risks of Youth Working on Farms	10/18/16	National Assn. of Supervisors of Ag Ed Conference. Materials Distributed: Quality time posters, Garden booklets, Farm equipment booklets, ATV rack cards, Stand TALL flyers, NCCRAHS Resource brochure, Parent 1 <sup>st</sup> posters
Activity/Exhibit	AYWG/AKME	National FFA Conference	10/16	Interacted with youth (spinning wheel game) and discussed/distributed resources to teachers. Materials distributed: Garden booklets, Farm equipment booklets, ATV rack cards, Stand TALL flyers, NCCRAHS Resource brochure, Parent 1 <sup>st</sup> posters
	SAY	National FFA Convention	10/16	Interacted with students and teachers about ag safety. Provided information to teachers about SAY Clearinghouse and students participated in hazard hunt.
Poster	SAY	SAY Project Pull-up Poster	11/16	Used during AAEE and ASCHA conferences in Las Vegas, NV.
Presentation	Young Workers	Safety Principles That Apply to Multiple Agricultural Tasks for Youth	11/16	Midwest Rural Agricultural Safety and Health Conference
Document	Young Workers	Online Supervisor Training	12/16	This is a complete draft that has been pilot tested in English and Spanish-speaking populations.
Report	Evaluation	2016 Project Advisor Report	12/16	
Survey	Evaluation	2017 Safety in Agriculture for Youth (SAY) National Clearinghouse Evaluation Survey	12/16	
Presentation & Resources	SOC	The Ultimate Balancing Act: Keeping Children Safe Who Live, Work and Play on Farms	12/03/16	WI Farm Bureau Young Farmers Conference. Materials distributed: Quality time posters, Garden booklets, ATV rack cards, Stand TALL flyers, NCCRAHS resource brochure, AYWG flyers, Parent 1 <sup>st</sup> posters
Presentation & Resources	AKME/SOC	Working Safe: Preventing and Responding to Injuries	01/10/17	Wisconsin Fair Boards Convention. Materials distributed: NAGCAT Guidelines, SaGHAF Guidelines, Agritourism Flyer, AYWG Flyer, ATV rack cards, NCCRAHS brochures
Presentation & Resources	AKME/SOC	<ol style="list-style-type: none"> <li>1. Visitors on Farms &amp; Ranches: Keeping them safe</li> <li>2. Emergency – How do I plan for that?</li> </ol>	01/20/17	Upper Midwest Regional Fruit & Vegetable Growers Conference. Materials distributed: Agritourism flyer, Agritourism signs, Emergency checklist, plan and policy templates and instructions, AYWG Flyer, Safe Play booklets
Publication	Filling Gaps	News Reports and Their Role in Child Agricultural Injury Prevention	01/20/17	
Publication	Filling Gaps	Social Environments, Risk-taking and Injury in Farm Adolescents	01/30/17	
Blog Post	AKME	Little Lives, Big Problems	01/17	Blog posting



**NCCRAHS' RESOURCES, PRESENTATIONS, and MATERIALS DEVELOPED in GRANT YEAR THREE (FY '17)**

Type of Resource	Core	Title	Date	Notes
Publication	BFR	Ethics and Risk in Agriculture	02/17	Published in JAM – Anthro edition.
Website	Protecting Children	<a href="http://www.marshfieldresearch.org/nccrahs/protecting-children-while-parents-work">http://www.marshfieldresearch.org/nccrahs/protecting-children-while-parents-work</a>	02/08/16	Description of the project and key contacts.
Document	Protecting Children	Networking strategy	Spring 2017	Draft process to develop partnerships between agricultural representatives, Migrant and Seasonal Head Start leaders, family service providers, government agencies and other key stakeholders to plan for regional approach.
Webinar & Resources	Admin/AKME/SOC	Seconds to Tragedy: Video and Curriculum for Young Workers	02/22/17	AgriSafe & GHSC: Participate in GHSC as part of CASN, AgriSafe also a member. Distributed AYWG and GHSC curriculum.via links
Manuscript	Young Workers	Manuscript describing training and pilot	03/17	Additional manuscripts will be developed as needed.
Report	Evaluation	2017 Cross-Project Exploratory Qualitative Analysis Initial Report	03/17	
Funding	AIN	AgInjuryNews.org: Building Capacity and Sustainability of a National Resource for Agriculture-related Injury and Fatality Information	03/01/17	
Workshop & Resources	AKME/SOC	1. Agritourism Safety and Emergency Management 2. Emergency Preparedness 3. Mock Safety Inspections	03/07-09/17	Two workshops presented in Louisiana. Materials Presented: Agritourism Flyer, Agritourism Signs, Emergency Checklist, plan and policy templates and instructions, AYWG Flyer, Safe Play booklets
Interview	AKME	Ag Safety in the U.S.	03/17/17	POLITICO Reporter – Ian Kullgren
Fact Sheet	Admin	2017 Child Ag Injury Fact Sheet	04/17	2-sided fact sheet updated annually
Document	Evaluation	2017 Cross-Project Exploratory Qualitative Analysis Initial Report – Executive Summary	04/17	
Document	Evaluation	Questions for the NCCRAHS Scientific Advisors Luncheon @ Annual Meeting	04/17	
Report	Evaluation	2017 Safety in Agriculture for Youth (SAY) National Clearinghouse Evaluation Baseline Survey Results	04/17	
Presentation	Admin	Child Labor Laws in Agriculture	05/05/17	Presentation developed and presented to graduate students and faculty at Edgewood College.
Award	AKME	Outstanding Researcher Award Acceptance	05/11/17	NRHA (National Rural Health Association)
Presentation	SOC	Agricultural Youth Work Guidelines	05/17-18/17	NCERA-197 (North Central Education/Extension Research Activity) Annual Meeting: Discussed progress on current agenda and focus areas of next agenda. Presented AYWGs

**NCCRAHS' RESOURCES, PRESENTATIONS, and MATERIALS DEVELOPED in GRANT YEAR THREE (FY '17)**

Type of Resource	Core	Title	Date	Notes
Workshop / Walkthrough	SOC	1. Wright's Dairy Farm 2. Morning Glory Farm 3. Bishop's Orchards	5/30-31/17	Farm Credit Services East
Presentation & Resources	AKME/SOC	Safety in Agritourism	05/31-06/01/17	NE Ag Safety and Health Coalition Meeting: Train the Trainer presentation & mock safety inspections. Materials Distributed: Agritourism Flyer, Checklists & Resources
Report	Evaluation	2017 NCCRAHS Scientific Advisors' Meeting Evaluation Survey Results	05/17	
Report	Evaluation	2017 AgInjuryNews.org Steering Committee Meeting Evaluation Survey Results	05/17	
Presentation	AKME/AYWG/SOC	Celebrate! Premier of the Next Generation of Ag Work Guidelines	06/26/17	ISASH Members
Presentation	AKME	News Clippings as a Surveillance Tool: An Update on AgInjuryNews.org	06/27/17	ISASH Members
Document	SAY	Clearinghouse Handout	06/17	Distributed to Pennsylvania Ag Educators at their 2017 Summer Institute and handout available at the ISASH Conference.
Presentation & Resources	Admin/AKME/SOC	1. Free Tools for Teaching Grain and Agricultural Safety 2. Using Work Guidelines in SAE's	06/28-29/17	Wisconsin Association of Agricultural Educators (WAAE) conference. Materials Distributed: GHSC Curriculum, AYWG Flyer & Guidelines, NCCRAHS brochure
Webinar	Admin/SOC/AYWG	Special Populations: Youth in Agriculture Child Safety on the Farm	07/06/17	AgMed Course: Recorded for participants to watch on demand.
Presentations & Resources	AKME/SOC	1. Agritourism Safety: Look at Your Operations with Whole New Eyes 2. Emergency Response Planning	07/13-14/17	Agricultural Retail Benchmarks Member Retreat. Materials Distributed: Agritourism Flyer, Agritourism Signs, Emergency Checklist, plan and policy templates and instructions, AYWG Flyer, Safe Play booklets.
Webinar	Admin/SOC	Fall and Electrical Hazards	09/13/17	Participate in GHSC as part of CASN, AgriSafe also a member. Webinar received coverage in Country Today newspaper.
Webinar	AYWG/SOC	Children & Youth: Living, working & playing safely on farms	08/20/17	Done as part of National Farm Safety & Health Week.
Presentation	AKME	Are Accidents Waiting to Happen?	08/23/17	Cooperative Network – 2017 Dairy Plant and Field Reps Conference
Curricula	Admin/SOC	GHSC curriculum module updated and revised to "Fall and Electrical Hazards"	08/17	Curriculum developed with funding from GHSC (part of CASN), webinars and materials co-branded by NCCRAHS.
Presentation	AKME	HPV Vaccination Refusal	09/07/17	
Presentation	BFR	Understanding Beginning Farmers and Ranchers: Attitudes toward Child Safety and	09/10/17	SRIP Internship: This is a key component of the summer internship program. Rachael's presentation was very well received.

**NCCRAHS' RESOURCES, PRESENTATIONS, and MATERIALS DEVELOPED in GRANT YEAR THREE (FY '17)**

Type of Resource	Core	Title	Date	Notes
		Safe-Play Areas		
Webinar & Resources	Admin/SOC	Fall and Electrical Hazards	09/13/17	GHSC (AgriSafe): Materials Distributed via website links: GHSC Curriculum, AYWG Flyer, AYWG Guidelines.
Webinar & Resources	AKME/AYWG	Children and Youth: Living, Working and Playing Safely on Farms	09/20/17	National Farm Safety and Health Week: Materials Distributed via website links: AYWG Flyer, AYWG Guidelines, SaGHAF, Safe Play, KKAT poster, ATV rack cards, CASN website, and Agritourism website.
Training	Admin/SOC	Grain Bin Coalition Training Partners with GHSC materials & RF-DASH	09/25/17	
Document	Protecting Children	Policy recommendations	Fall 2017	Provide recommendations that inform federal/state policy and programs supporting child care services for farmworkers.
eNews	SAY	Clearinghouse eNews	02,05,09/17	Was sent to Utah and PA 4-H and FFA listservs.
Journal	Admin	<i>Journal of Agromedicine</i> , Vol. 22, No.4	Sept. / 17	Full issue dedicated to Socio-Ecological Model as applied to agricultural safety